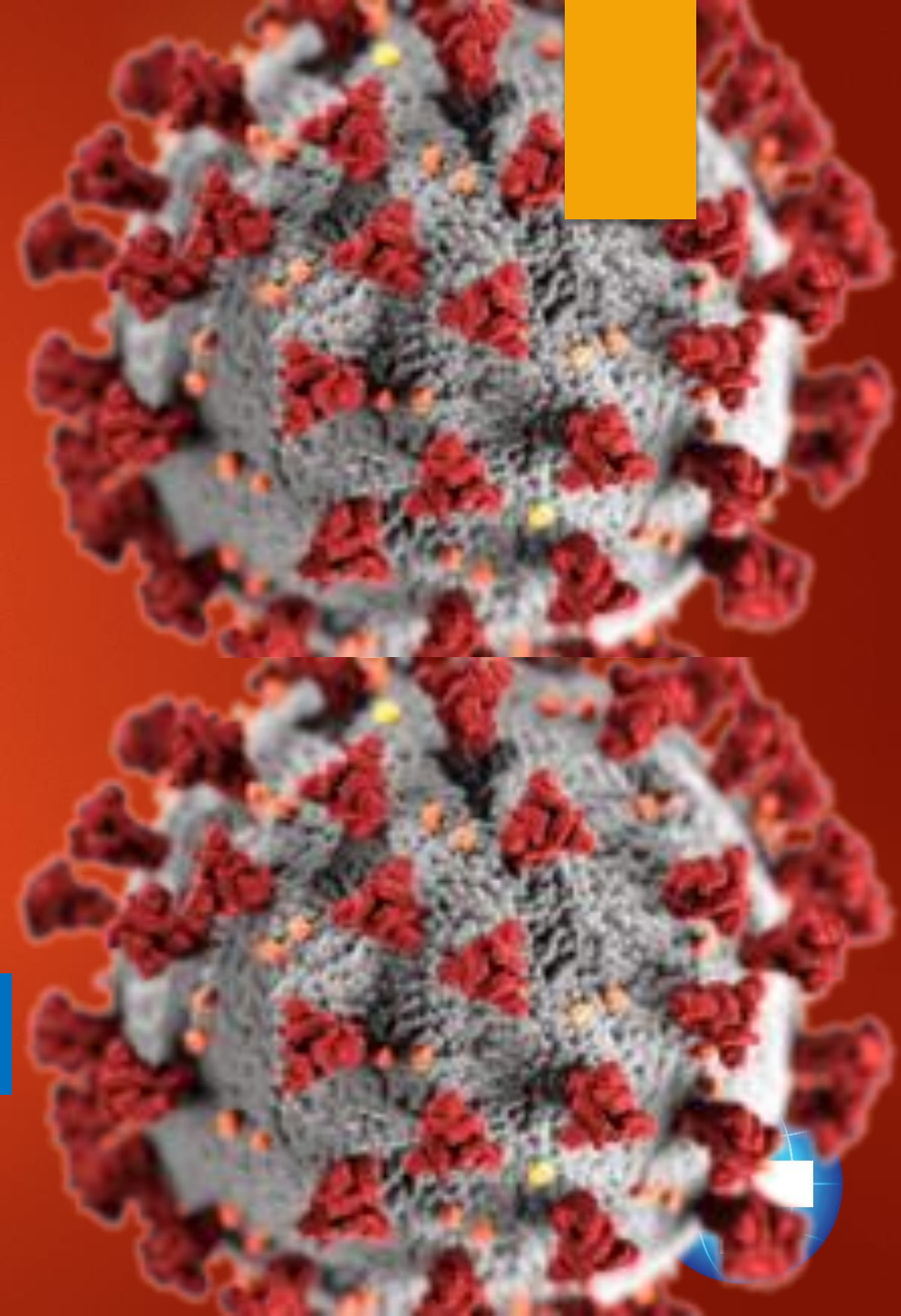


Management of Critically ill Covid-19 Patients: Nigerian Experience

KOFO OGUNYANKIN MD FACC FASE, FRCP



PRESENTATION to Critical Care Unit

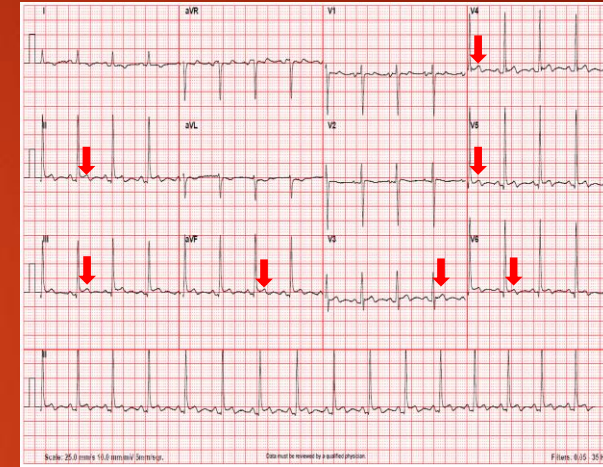
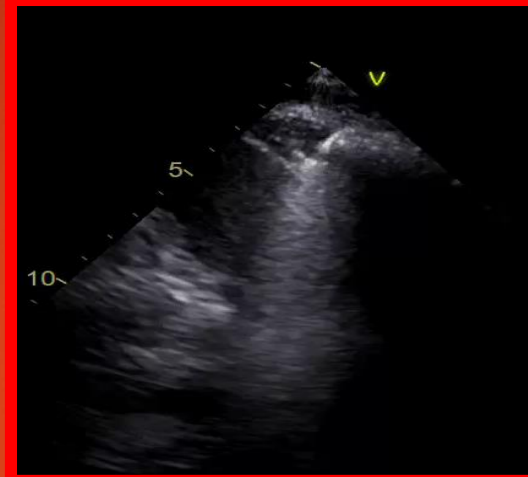
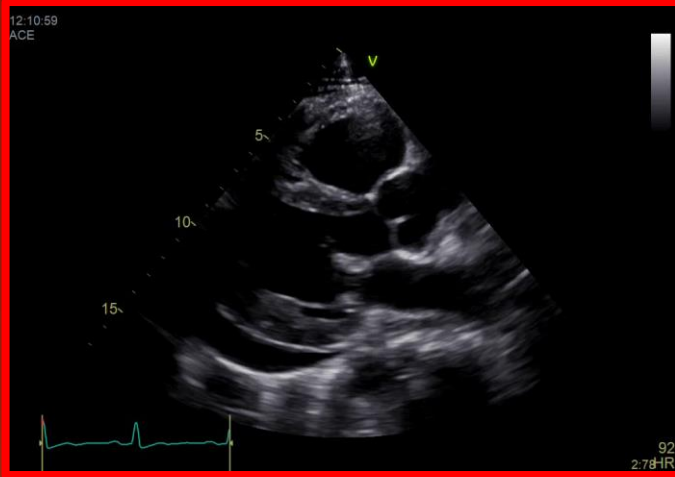
TYPICAL

- Deteriorating following hospitalization at another hospital
- Failed oxygen therapy at home
- Severely ill with respiratory distress or hemodynamic collapse

ATYPICAL

- Chest pain assoc with breathlessness
- Severe hyperglycemia and hypotension
- Progressive aphasia and generalized weakness with hypoxemia

Adjuncts to Speedy Diagnosis and Risk Stratification



Laboratory Risk Markers

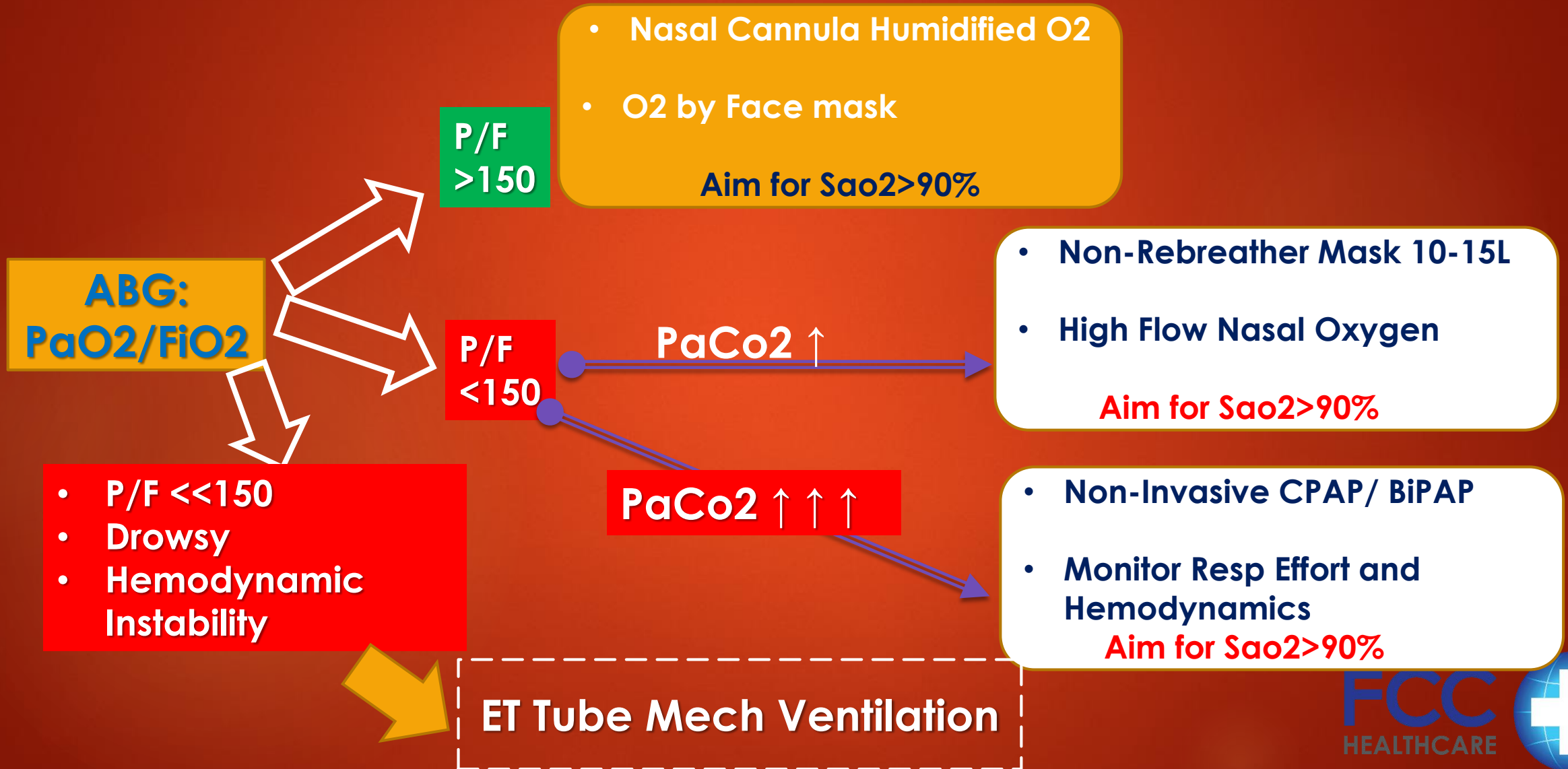
- CRP
- Ferritin

- D-Dimer

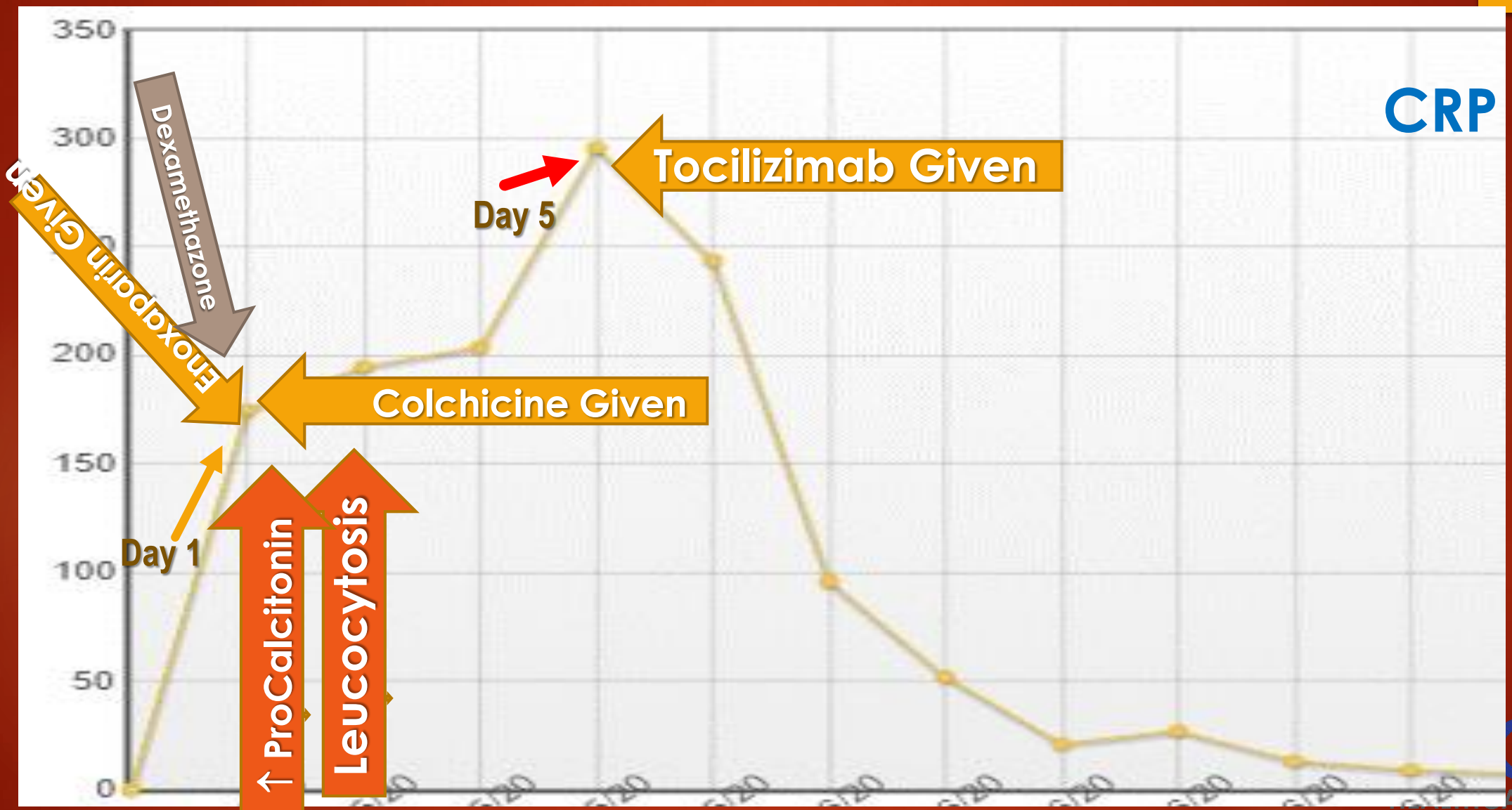
- Troponin
- Blood Glucose



Pulmonary Management



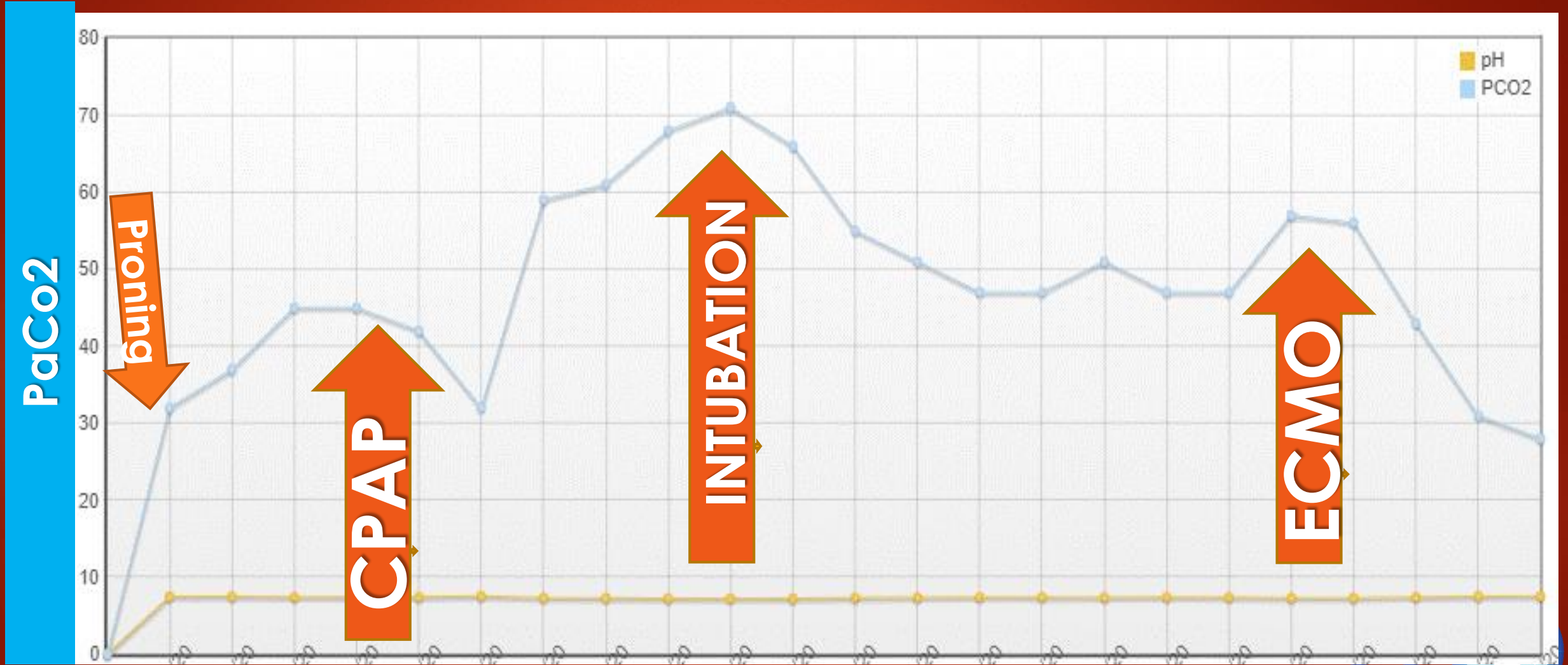
RISK MARKER MANAGEMENT



CRP



SEVERE NON-RESPONSIVE Critical Care



PaCO2

pH
PCO2